



TIRUPATITM
INTERNATIONAL



www.tpaper.in

Foil - 16

Industrial high speed digital Sublimation printer & High performance Dryer



**16 Pcs i3200 Print
Heads Speed**

4pass-(360x1200dpi)

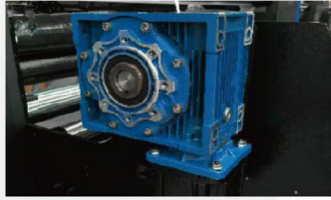
100m/h

8pass-(360x2400dpi)

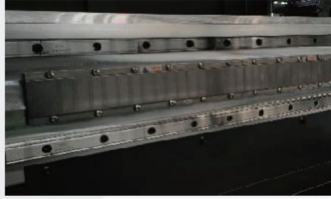
50m/h

16 Print head configuration

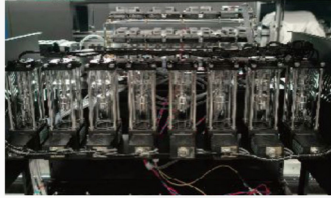
It adopts advanced board control technology, equipped with 16 i3200-A1 print heads and 3.5pl ink droplets. The industrial grade design ensures the durability of the print head. The new automated production scheme, high-strength industrial design structure, can be equipped with 3000 meters of foil & paper with performance, and the unattended automated - production scheme can be fully realized, so that the productivity has further improved.



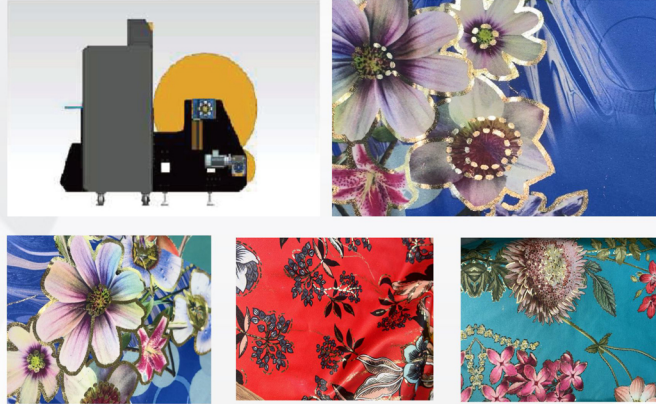
Paper retracting system adopts industrial servo drive reducer, which has high speed, high precision and more stable paper retracting.



High quality THK silent linear motor, low noise, high precision, durable.



Negative pressure ink supply unit, efficient and stable, long time printing ink.



PRINTER - SPECIFICATION'S

Model	TX-2216	
Print Head	16*i3200-A1 Print Heads	
Printing Speed	4pass-(100m/h) 8pass-(50m/h)	
Printing Technology	Piezoelectric Inkjet	
Printing Width	2050 mm	
Machine Width	2250 mm	
Ink Cartridges	Kind Ink supply method Capacity Color	High-concentration heat transfer ink Negative ink supply 10L CMYK (6color or 8colors Optional)
Print Media	Heat Transfer Foil & Paper	
Ink Size	3.5pl	
Dryer	External Automatic Air Heat Integrated Dryer	
Moisturizing unit	Fully automatic cleaning and moisturizing components	
Interface	LAN	
RIP Software	Neostampa / Riprint	
Support Image	JPG / TIFF/ PDF	
Computer Configuration	Operating System	Win7 64-bit / Win10 64-bit
	Hardware Requirements	Hard disk : 500G Above (SSD is recommended); Running more than 8G memory; graphics card : ATI discrete graphics 4G memory; CPU: i7 processor
Power	Input Voltage	AC 220 V ± 5%. 16A, 50 HZ± 1
	Printing system Drying system	7000W Maximum 18kw
Package size / Weight	Machine: 4800x900x2000 mm/ 1400 kg / 10000 meters of	
Machine size / Weight	4550x2550x1750 mm / 1800 kg	
Standard assembly	Intelligent drying system, continuous ink supply system, ten thousand	
Working Environment	Temperature: 20°C~ 32°C; Relative humidity 40%~65% (No	
Carryable Materials	3000 Meter	
Material specifications	≥ 30 g	

DRYER - SPECIFICATION'S

	Power Parameters
Hybrid	0.75KW
Circulating fan	2.2KW
Dehumidification fan	0.25KW (Wind Gap 110*110)
Roller	0.75KW
Electric heating	2KW*12=24KW
Machine Size	3060*2260*1775
Package Size	4050*2260*1775

CONTACT US

+91 82384 33322

+91 99788 00900

+91 75738 33322

+91 99788 12212

✉ sublimationtpaper@gmail.com

PLOT NO - 2, T.P - 48 OPP. SAI UNITY RAW HOUSE, NEAR S.M.C SCHOOL,
BHESTAN, SURAT - GUJARAT - INDIA - 395023