



TIRUPATITM
INTERNATIONAL



www.tpaper.in

Dye Sublimation Printer

(16 HEADS)

Production

1 PASS - 9600 Mtrs/Day

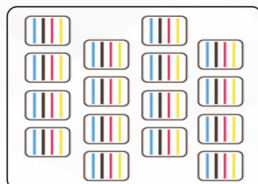


Tx-16



Sublimation Ink

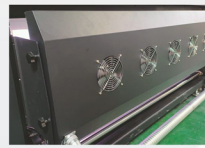
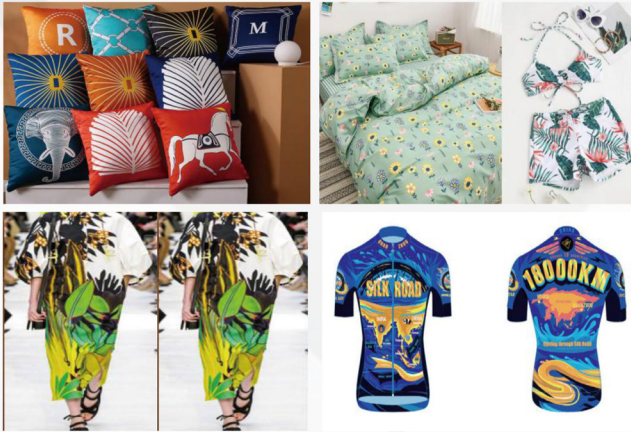
16*3200 Heads
CMYK



1pass-(640 m²/h)

2pass-(320 m²/h)

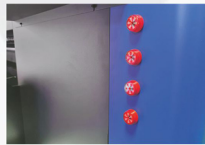
Both the sublimation and direct-to-textile printers are examples of our expertise and engineering top performing, reliable and precise. With the TIRUPATI series printer, you can maximize productivity while controlling quality and minimizing cost for beautiful soft signage, apparel, and interior decor items that will set your business apart from the competition. Wide application in clothing, home decoration fabric, samplings, shirt canvas bags, bolster scooter, flags, textile gadgets, etc.



Front + bottom drying device, stable and efficient, fast drying.



Independent adjustable lifting paper rubbing wheel effectively solves problems such as uneven media drumming during printing.



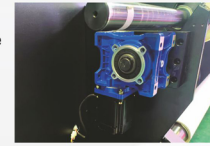
Ink-deficient alarm beeping device provides customers with more intuitive and convenient services.



Plue roller feeding system ensures that the material is more stable and neat.



10L large ink barrel: provide a stable ink supply system to ensure amazing continuous printing.



The Ac servo motor is combined with a high - quality reducer to provide stable high - speed movement and smoother paper delivery.



Two external infrared drying systems are used for drying control at the front end and bottom.



Equipped with widened and thickened beams and THK high-quality silent double rails, the equipment is more stable in high-speed printing.

● TECHNICAL SPECIFICATIONS

Model	TX-16	
Print Head	16*3200 Print Heads	
Droplet Size	3.5pl	
Printing Speed	1pass-(640 sqm/h) 2pass-(320 sqm/h)	
Ink	Kind Color Ink supply method Capacity	High-concentration heat transfer ink CMYK (4colors) Syphon ink supply 10 L
Machine width	1950 mm	
Print width	1900 mm	
X-axis transmission	Belt drive	
Receiving and discharge structure	Rear release / frequency conversion motor	
Carryable materials	3000 Meter	
Material specifications	≥ 30 g	
Drying structure	External multi - stage automatic control wind and heat all-in- one dryer	
Moisturizing structure	Fully automatic cleaning and moisturizing components	
RIP	Standardly equipped with Ruiyin beidou version	
Support image	JPG, TIF, PDF	
Computer configuration	Operating system Hardware requirements Interface	Win7 64 - bit / Win10 64 - bit Hard disk : 500G Above (SSD is recommended) , Running more than 8G memory; graphics card : ATI discrete graphics 4G memory; CPU: i7 processor LAN
Power	Input voltage Printing system Drying system	AC220V ± 5%, 16A, 50Hz 2000W Maximum power : 18KW
Standard assembly	External automatic control of air and heat all-in-one dryer, liquid level alarm system, double expansion shaft automatic feeding system, automatic moisturizing cleaning system	
Working environment	Temperature : 20°C / 32°C ; Relative humidity 40% / 65% (No condensation)	
Machine size / Weight	3734x1232x1588 mm / 850 kg	
Package size / Weight	3860x1130x2000 mm / 890 kg	

CONTACT US

+91 82384 33322

+91 99788 00900

+91 75738 33322

+91 99788 12212

✉ sublimationtpaper@gmail.com